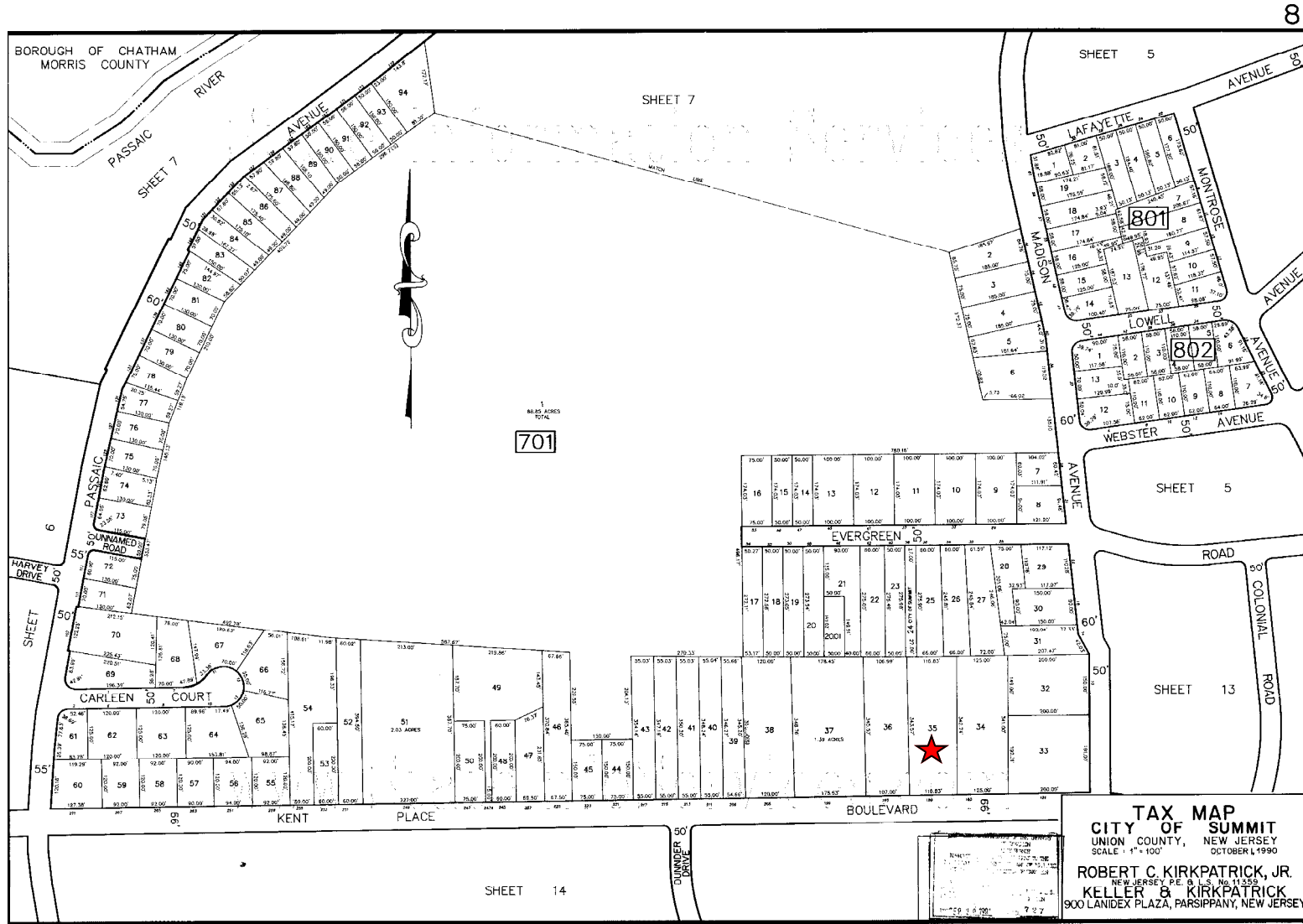


189 Kent Place Boulevard Summit, NJ Tax Map



TAX MAP
CITY OF SUMMIT
 UNION COUNTY, NEW JERSEY
 SCALE: 1" = 100'
 OCTOBER 1, 1990
 ROBERT C. KIRKPATRICK, JR.
 NEW JERSEY P.E. & S. No. 11359
KELLER & KIRKPATRICK
 900 LANIDEX PLAZA, PARSIPPANY, NEW JERSEY

Kim Cannon
Burgdorff ERA Realtors
908-522-3876
www.KimCannon.com